

elecworks™

Schematic Design Software
pneumatics / hydraulics / electrics

Software for design of automation projects.

elecworks™ is a powerful new generation software tool, that enables schematic designers and automation experts to create automation and pneumatic or hydraulic installation projects. Through Windows standard interfaces, engineers can produce better installation designs and supporting documentation faster.

elecworks™ allows project data to be entered right from the preliminary research stages. A huge part of the project planning can be achieved even before completing fully-fledged schematic diagrams, thanks to the processing tools like the Components Management.

elecworks™ has been originally developed to do electrical CAD, but it has a comprehensive pneumatics and hydraulics libraries too. So, to create schematic diagrams you use pipes and the symbols, when inserted or deleted, ensure the continuity of the pipes.

There is no learning curve, using **elecworks™** is straightforward. You just drag and drop or use the smart tools designed to automate the schematic generation process. Smart Help and contextual menus will help the user whatever the command. **elecworks™** allows users to create not only small projects but also lets an entire team to collaborate on large scale projects.

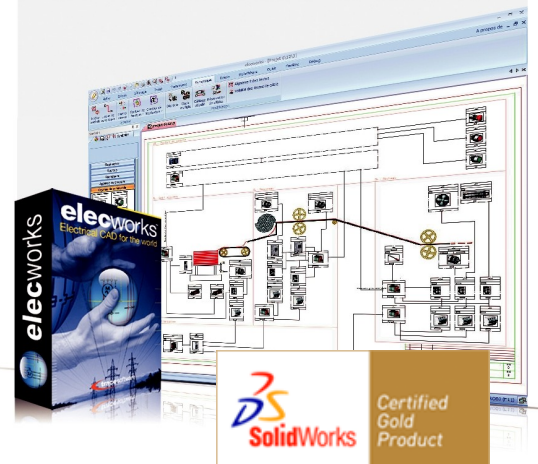
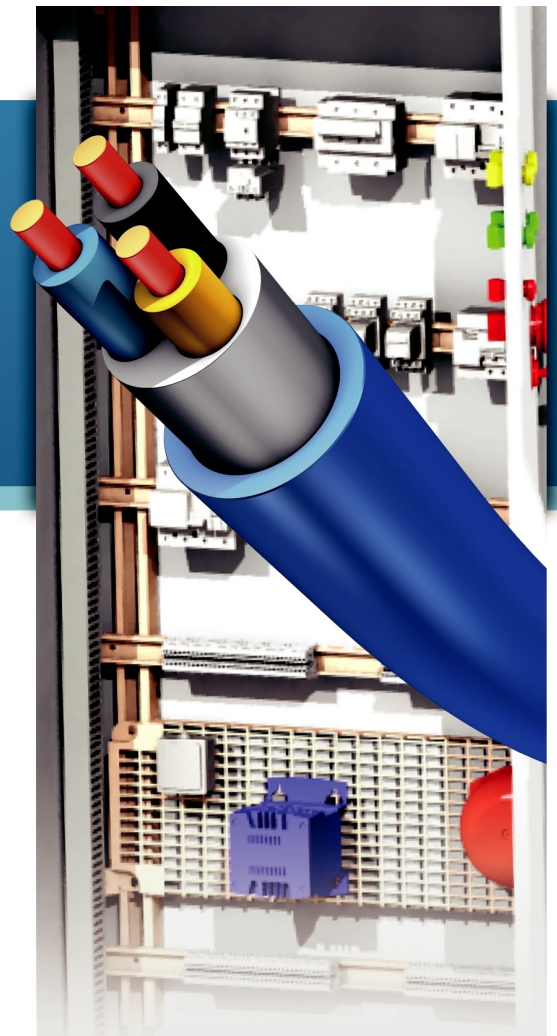
Schematics and SolidWorks 3D Design

elecworks™ marks a revolution in schematic engineering (pneumatic/hydraulic/electrical), designed for mechanical and pneumatic / hydraulic team collaboration, **elecworks™** allows users to work on all areas of a digital installation feasibility in real time, whether it be the schematics or the equipment management.

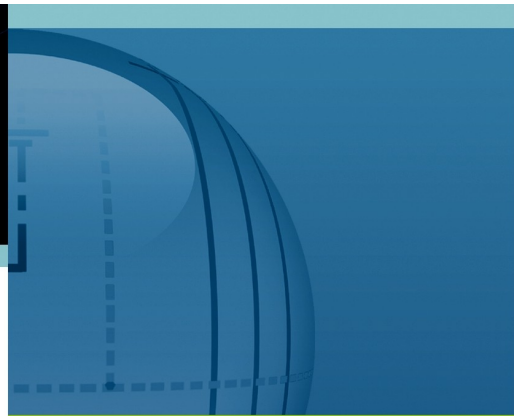
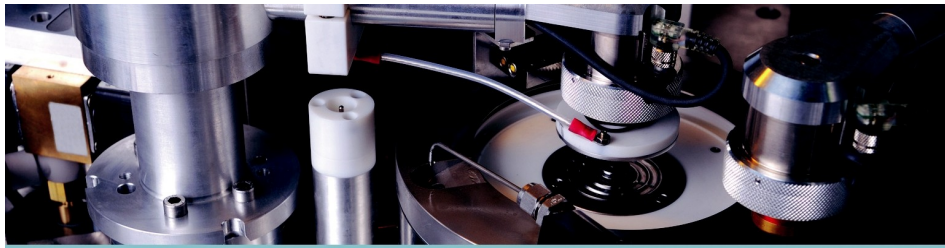
Schematics and 3D Design: Trace Software, part of the SolidWorks Solution Partner program, develops **elecworks™** to provide SolidWorks designers with the tools to use and share pneumatic / hydraulic / electric and automation information on the 3D mock-up.

The technology

elecworks™ is the result of an unprecedented technological development. The graphical part is stored in a native DWG compatible format that enables data exchange between different software in the market. The database is SQL Server, the configuration data are in XML format, the application is 100% Unicode



tracesoftware

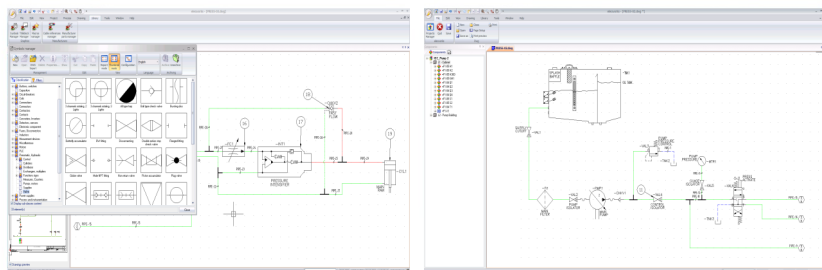


elecworks™

The user interface

With the rich experience of 20 years in the field of schematic (pneumatic/hydraulic/electrical) and mechanical CAD/CAE, Trace Software has created an exceptionally innovative product, bringing all new, faster and more reliable working methods.

elecworks™ is completely inspired by Windows standards and has multi-level UNDO/REDO available for all functionalities. The product has contextual menus and a ribbon interface that enables the user to access commands in a naturally easy way.



A database to stock a project data

elecworks™ stocks all installation information, from symbols and lines, up to the complete description of components in a database representing the digital template of an installation. When you work with **elecworks™**, you are interacting with this database in real-time.

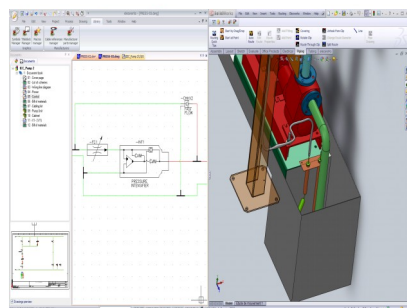
elecworks™ for SolidWorks

For the engineering consultancies working with SolidWorks, **elecworks™** allows data sharing between 3D models and the automation directly from the SolidWorks menu.



3D Layout & Data module lets you realize 3D assemblies, insert 3D parts...with real time consistency checking and updates. 2D native DWG files are automatically generated to complete project documentation.

Routing module, (requires SolidWorks Routing), enables 3D pipe routing with optimization and pipe length calculation.



All **elecworks™** modules for SolidWorks, interface between programs real time with shared **elecworks™** data. There is also instant messaging to facilitate a uniquely smooth collaborative process between different project participants

The main functionalities

elecworks™ contains all the functions and necessary applications in order to prepare documentation and to produce the automation installation:

- Schematic design tool, draw multiple lines, insert symbols with an automatic break in the line
- Multi-standard symbol library
- Layout library, expert copy of sheets and projects
- Automatic generation of terminal strips and their management
- Management of I/O and PLCs management
- Manufacturer database, multi-catalog search tool, detailed classification of devices base
- Numbering of lines according to different norms, real-time cross-references updates
- Location and functions management according to the norm IEC61346, ISO1219
- Incorporating all kinds of project documentation
- EXCEL interface, PDF printing option, output in DWG format
- Dynamic multi-language translation tool, automatic change of language of project folios
- Input of project lists without schema, ERP interface
- Navigation tool
- Lists in real-time, page-layout customisable by user, data export possible in different formats: EXCEL export
- Automatic identification of components, pipes, equipotentials, sheets, functions, and locations
- Multi-language application interface, multi-lingual project management
- The project can contain and display many languages at a time in the interfaces and schematics
- Automatic translation of the projects in all languages using an intelligent tool that works with a glossary project models creation
- Multi-user work environment to work in parallel on the same project



For more info

ACERI - Vendelier 61 3905 PD Veenendaal - The Netherlands - www.aceri.nl

E info@aceri.nl | www.aceri.nl P +31-(0)318 616924

